



www.forestprint.com.au

2 Sheffield Way Keysborough
VIC 3173 Australia

+61 3 8638 3842
+61 3 8638 3843
gejing@forestprint.com.au

Australian
SKYPE: ForestPrint

What you need to know when submitting artwork (Please go to www.forestprint.com.au for more detail)

- All embedded images must not be less than 300dpi.
- All logo and images have to be embedded into the artwork.
- Please make sure all text is correct as we will not alter your artwork and its content.
- Please make sure that your artwork has at least 1mm bleed around all corners.
- All important elements (text, images, logo etc.) have to be placed within the yellow line.

All Australian Delivery Service

- We use standard CMYK for printing. Using other colour models in your artwork such as RGB and Pantone might cause differentiation or error in the colours on your print product.
- Final print product might only be 85% close to what you see your artwork as on screen in terms of colour. An interval of 15% of colour differentiation is an acceptable standard for the printing industry.

PAPER BAG

Size: 260x90x350mm

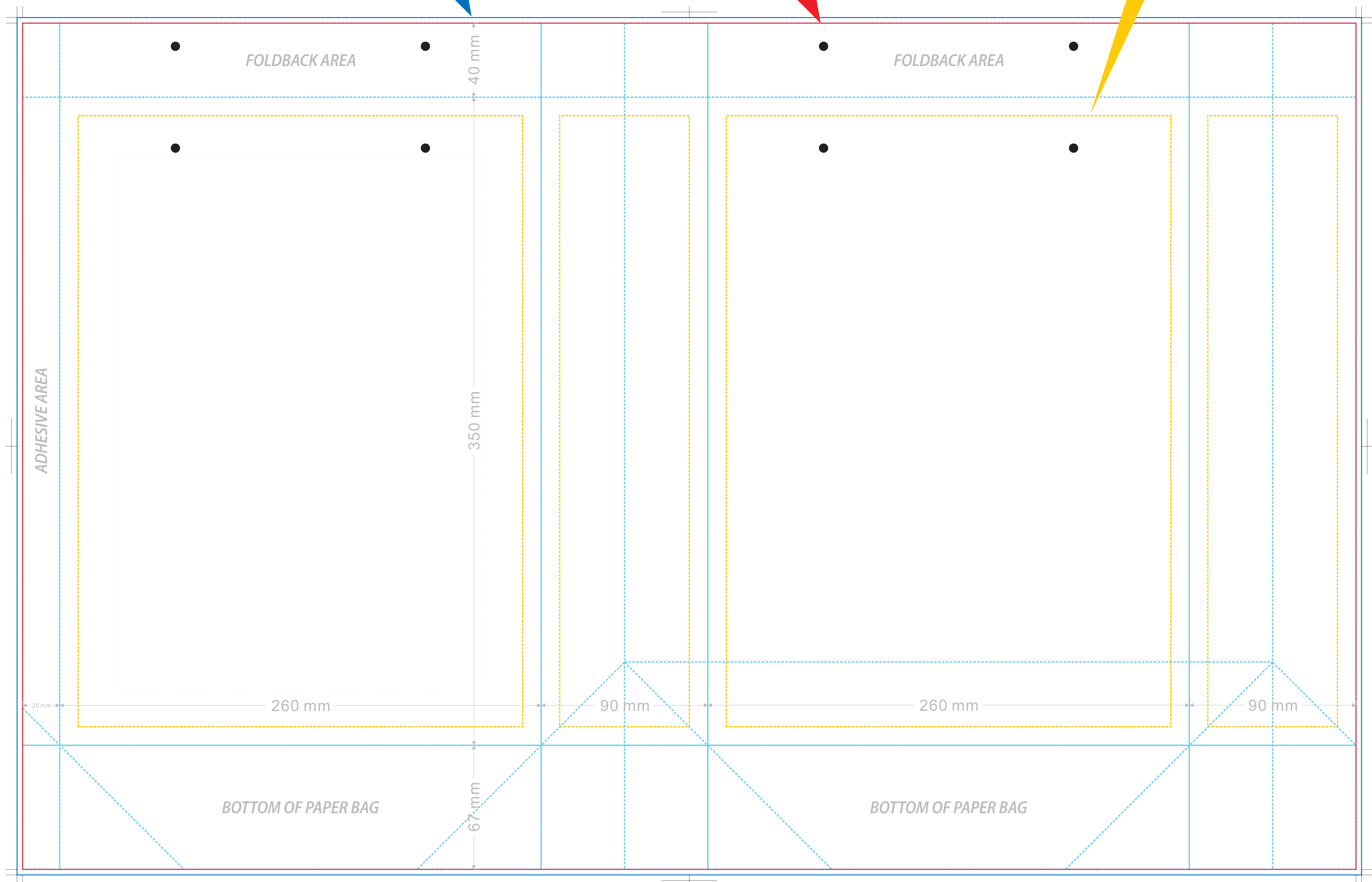
Colour: CMYK Printing

- 1 Edit and lay out text and images
- 2 Create outlines for all text or turn all text to curve
- 3 Save and upload onto www.forestprint.com.au or email to gejing@forestprint.com.au

BLEED AREA (726x463mm)
Enlarge background image around four corners to avoid undesirable white borders.

CROP AREA (720x457mm)
This will be the cropped size of the print product.

SAFETY MEASURE
All important elements (text, images, logo etc.) have to be placed within this area.



FOLDING LINE
 ACTUAL SIZE OF PAPER BAG
 INFORMATION OF DIMENSION